



## Tutorial

### How to sew binding to Neckline and armhole of Tidal one shoulder top.

In this tutorial you will be guided through steps to create binded edges to the Neckline & Armhole of Tidal one shoulder top pattern.

The hem line will remain as the traditional turn over method.

Follow the original Tidal one shoulder top sewing instructions from the beginning up to and including Stay stitch lining to Outer shell step.

Follow **Sewing instructions Tutorial** below to attach bindings to neckline & armhole of tidal top.

#### Tutorial – please note

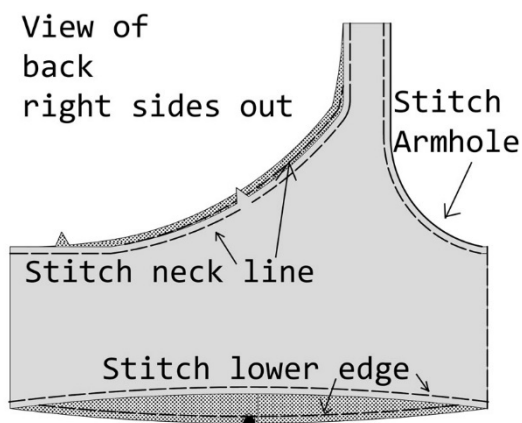
Generally, you would be instructed to trim of the seam allowance to retain the identical cut of the garment.

For this pattern we will leave the seam allowance on as the shoulder seam will become quite narrow and difficult to attach the binding if we trim the seam allowance.

The seam allowance on this pattern is 1cm or 3/8 inch. This will result in the shoulder seam slightly wider, neckline a little higher & armhole slightly smaller. It will not affect the fit of this style.

#### Sewing instructions Tutorial

Begin tutorial instructions after completing this step below (Stitch lining to outer shell) from the **Tidal one shoulder sewing pattern instructions**.



#### Stay Stitch lining to outer shell / section at

Neckline, armhole & lower edge. Stitch within the seam allowance.

*Sewing tip – you can use a serger or overlocker to complete this step also (. Do not trim)*

### Step 1 Binding strips

Cut 1x Neckline by the width of 3.5cm / 1 ¼ inches.

Cut 1 x Armhole binding by the width 3.5cm / 1 ¼ inches

### Neckline

Cut x1 binding strip Neckline	XS	S	M	L	XL	2XL	3XL
Metric /cm width 3.5cm	61.5cm	65cm	68.5cm	72cm	75.5cm	79cm	82.5cm
Imperial / inches width 1 ¼ inch	24 ¼ inch	25 ½ inch	27inch	28 ½ inch	29 ¾ inch	31inch	32 ½ inch

### Armhole

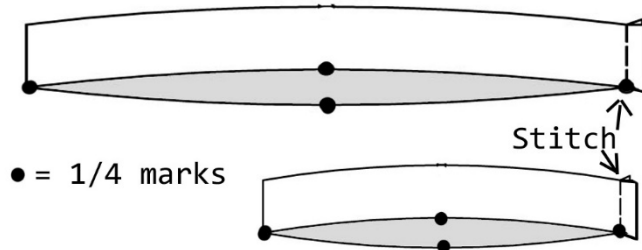
Cut x1 binding strip Armhole	XS	S	M	L	XL	2XL	3XL
Metric /cm width 3.5cm	38.5 cm	40cm	41.5cm	43cm	44.5cm	46cm	47.5cm
Imperial / inches width 1 ¼ inch	15 ¼ inch	15 ¾ inch	16 ¼ inch	17inch	17 ½ inch	18inch	18 ¾ inch

Right sides together stitch bindings together at short ends.

Divide into ¼ points. Mark these points.

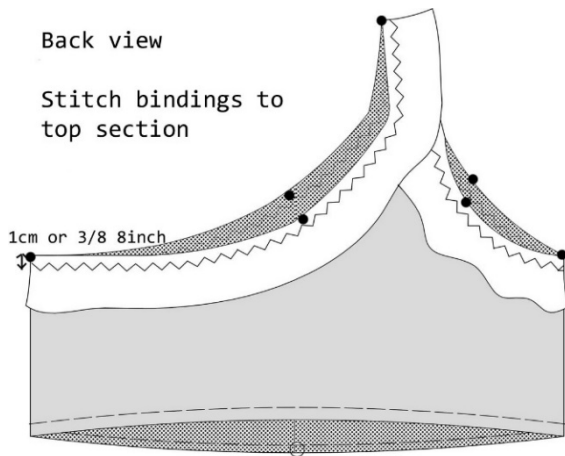
Mark neckline and armhole edges of top section into ¼ points.

### Neckline and Sleeve bindings



### Back view

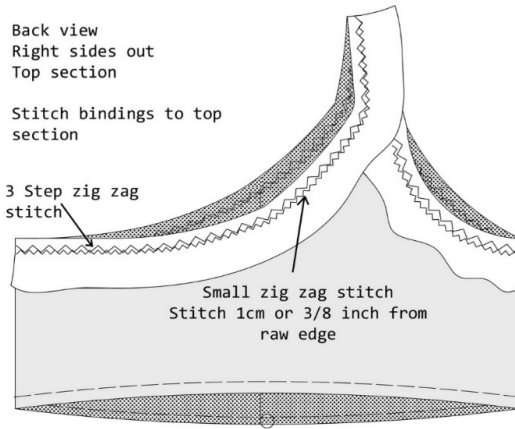
Stitch bindings to top section



### Back view Right sides out Top section

Stitch bindings to top section

3 Step zig zag stitch



### Step 2 Stitch bindings to top section.

Right sides together stitch bindings to neckline and armholes. Match ¼ marks, stretch bindings evenly between ¼ marks as you sew.

**Stitch in 1cm or 3/8 inch from raw edge. Do not trim off seam allowance.**

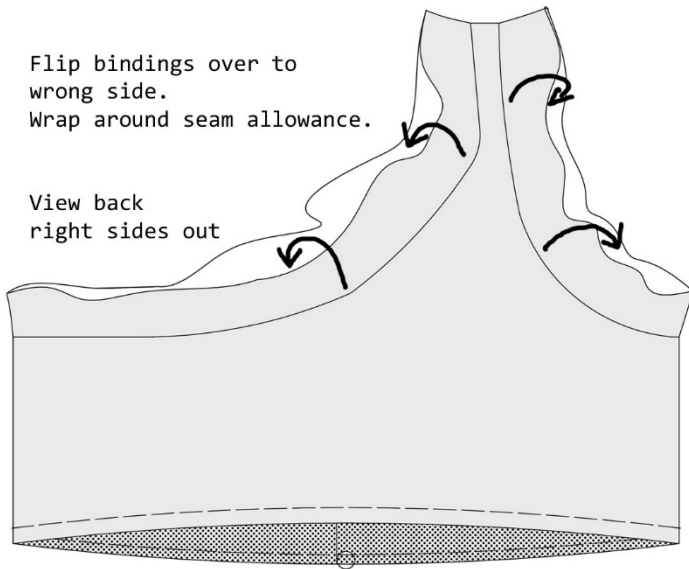
### Sewing tips -Suggested Stitch type.

**Basic sewing machine-** I suggest stitching the bindings to the top sections using a 3-step zig zag stitch. This will hold the bindings in position, now reset your stitch to a small to medium zig zag stitch. Stitch a 2<sup>nd</sup> row of stitching using the small to medium zig zag stitch around neckline and armhole. **Stitch in 1cm or 3/8 inch from raw edges.**

**Cover stitch machine** – You can also use your cover stitch to stitch seams together. Complete the step above using your cover stitch.

Flip bindings over to wrong side.  
Wrap around seam allowance.

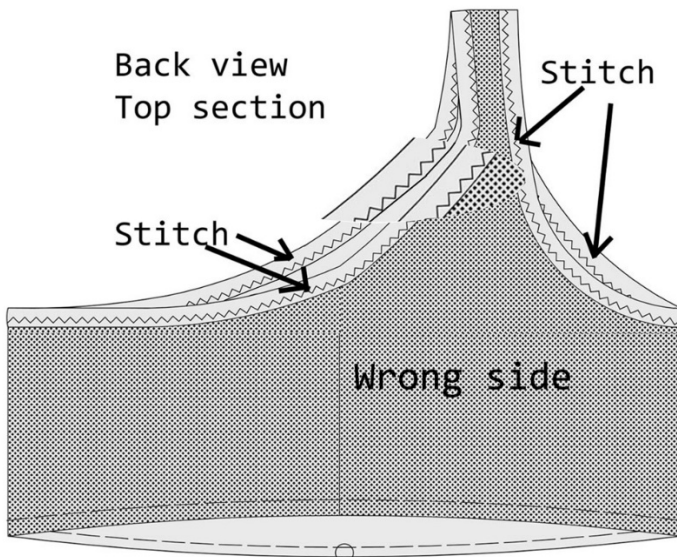
View back  
right sides out



Flip bindings over to wrong / inside of top section.

Wrap around seam allowance of 1cm / 3/8 inch.

Back view  
Top section



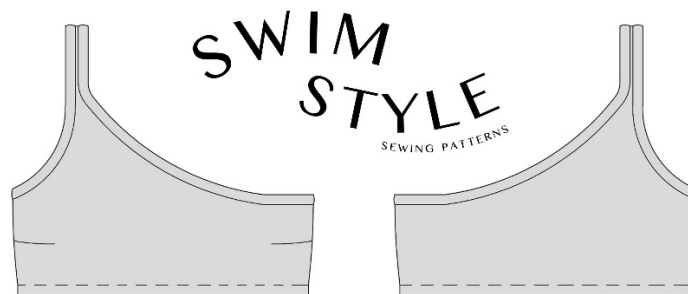
Stitch remaining binding edges to wrong side of top section.

Stretch evenly as you stitch. Stitch close to binding seam.

Suggested stitches, small zig zag, cover stitch or fancy stretch stitch.

Continue to follow **Tidal one shoulder top sewing instructions.**

Complete the lower edge and insert bra cups steps.



Swimstyle.com.au

